

# SILVER HILL

## TOWNHOUSES

DEVELOPMENT BY



# UNITY IS COMMUNITY

Unity Homes is the leading property developer of residential communities in Kenya. Unity Homes was founded in 2014 with the vision of providing quality housing across Africa.



# TATU CITY MAP





# WELCOME

Silver Hill by Unity Homes is a master-planned community that offers a unique living experience and is a social entertainer's dream.

This magnificent piece of architecture can be found along Crawford Road, Tatu City.







Silver Hill's elegant 2,345 sq. ft. cul-de-sac homes are built in refined transitional Georgian architecture and impress at every turn with a radiant colour palette, meticulous craftsmanship, and opulent finishes. It is situated on 6 acres of land.

While maintaining the integrity of this midcentury design, the home's timeless facade blends with design updates such as a reinforced concrete roof clad with bitumen shingles and intricate mouldings on the facade.



The entrance to the house is through a solid black-paneled Georgian door and leads to a tranquil main level open-plan layout that is furnished with wooden textured vinyl tiles and an integrated credenza.

The living room on the main level has extensive sliding doors that lead out to a large backyard terrace and a green lawn and a paid option to install a fireplace for those cosy evenings.







A composite fence encloses the exquisitely landscaped lawn, which is perfect for entertaining and unwinding in the evening.



The opulently designed kitchen is next to the living room and inbuilt high-end appliances, pantry space, custom premium cabinetry with soft-closing doors and an island with bar stool seating.

It also has marble countertops and backsplash. The kitchen is beautifully illuminated by pendant lights above the island, strip lighting above the cabinets and recessed spot lighting all around.







A utility room (that doubles as a coat room), a cloakroom and an ensuite staff quarters are also found on the main level. The formal dining area, which has plenty of room for relaxing and entertaining, is also included.

The elliptical stairs that lead to the main suite on the first floor is illuminated by ambient lighting and a skylight that lets in natural light.



The main suite has a provision king-sized bed and plush seating area with French doors that open to a private balcony with a glass railing.







Separate walk-in closets for the couple.  
The master bedroom also houses the primary bathroom, which has a sensual corner unit with an paid option for a steam shower enclosed in a frameless glass screen, a water closet with an Arabic shower, a free-standing tub, dual vanity sinks and a dressing area.







The two additional guest suites, each with a private ensuite bathroom that gives off a Zen vibe and a private family room that completes this distinctive house, are located on the second level.





Get immersed in the scenic park that hosts numerous indigenous trees as you take a run through the jogging trail. The lush green park has an ample playground for the kids and an event space for those sunny barbecue weekends.





The estate has a Georgian style architecture clubhouse with intricate mouldings on the facade to match those on the residential units. It houses a gym, changing rooms and an open hall. Abutting the clubhouse is a state of the art swimming pool with an intergrated baby pool.



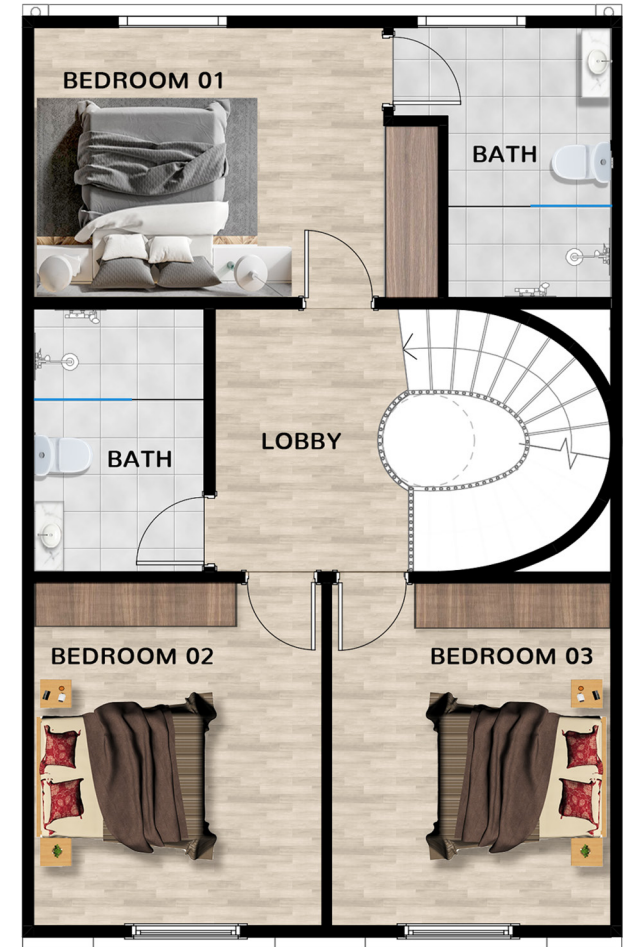
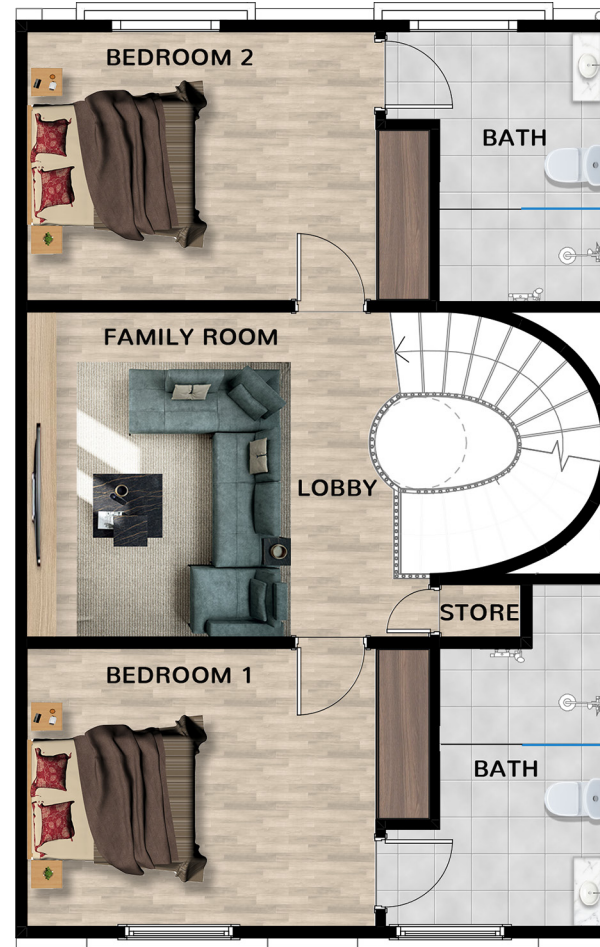














The dynamic aesthetic of each townhouse has been purposefully created to reflect the cultural richness and diversity of the Silver Hill neighbourhood and to make the most of your stay.





# Tatu City's Amenities

- Over \$500 million of infrastructure investment
- 3.2 million sqm of residential developments
- 130,000 sqm in the business corridor
- 230,000 sqm of our technology park



# Tatu City's Amenities


- Over 200,000 sqm of parks, playgrounds and open spaces
- Over 75,000 sqm of hospitals and health facilities
- 650,000 sqm of light industrial and warehousing facilities
- 445,000 sqm of school sites







CONTACT US

 +254 701 550 550

 [sales@unityhomes.co.ke](mailto:sales@unityhomes.co.ke)